

# REACH System

*Anywhere, Anytime Access to Your Data*

3225 NW Deer Run Corvallis, OR 97330

541-207-3735

### GIS Interface

Opens with a familiar GIS interface showing features you choose. All of your spatial data can be stored, accessed and analyzed with ArcGIS functionality on the web.

### Real-Time

Easily incorporates real-time data and handles constantly expanding time-series data sets.



### Up and Running

Ideal for organizations who want to rapidly deploy an affordable powerful web-enabled data discovery tool. Let the REACH System remove barriers to sharing and exploring your data.

### Collaborative Technology



Show your analysis and share your data with colleagues, co-workers and stakeholders.

### Easy to Learn

Intuitive menus guide you through each step. Clients are able to start using REACH after a single demonstration.

### Cloud Computing

No new hardware or software is necessary - just access to the web.



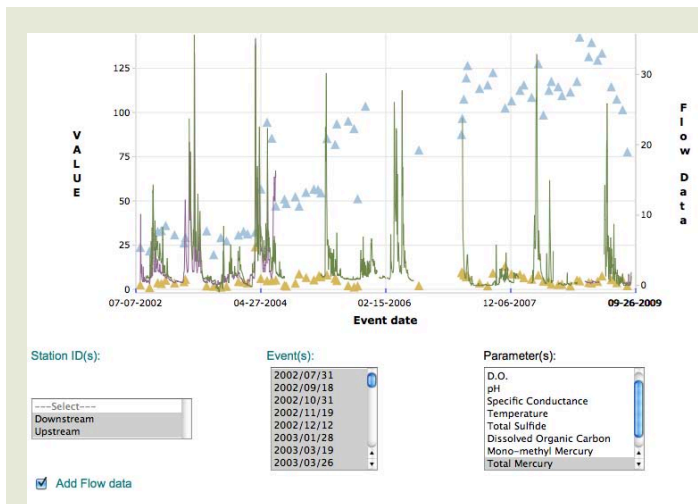
1004 Harbor Hills Drive Marquette, MI 49855

906-225-6787

## Why REACH?

*We developed the REACH System as a way to provide our existing clients with quicker and more complete access to their data. They have been so pleased with this tool that we have decided to offer it as a stand alone web service.*

Our effort to design a data access and discovery tool was inspired by our work on baseline hydrology studies of large watersheds with on-going monitoring efforts. Some of our projects have over 100 monitoring locations and the databases continue to expand. Data associated with these stations include

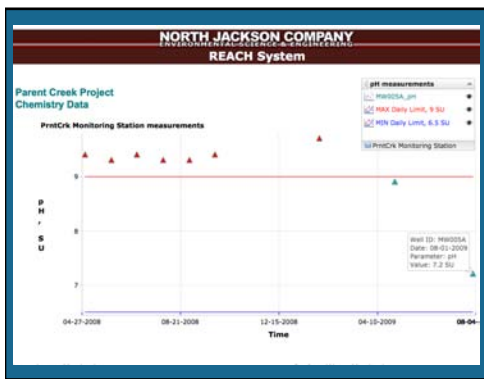
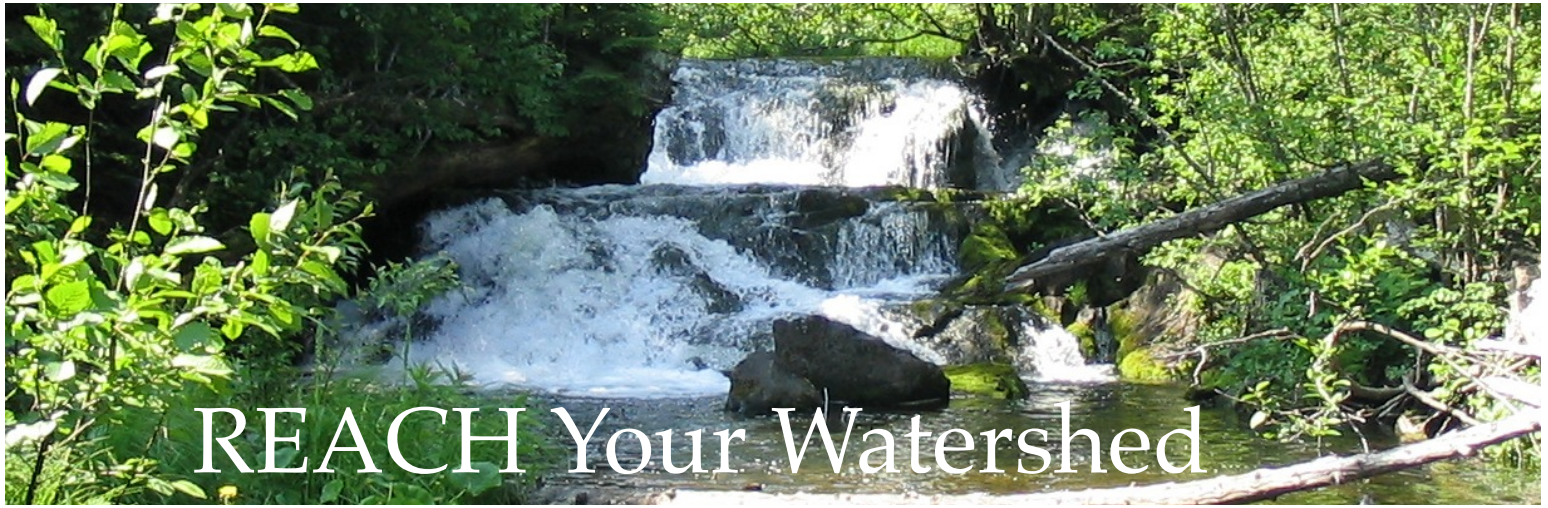


**Enjoy the ability to plot discrete data with time-series data. You can also easily add in publicly available data, such as weather from the NWS and flow from USGS to enhance your analysis.**

discrete and continuous parameters. Locations instrumented with continuous data recorders measure several

parameters on an hourly basis. This results in databases with well over 1,000,000 records that grow hour by hour. When we looked on the market we could not find a tool with the responsiveness, power and features we needed in one package. North Jackson Company arrived at an integrated software approach after failing to achieve the desired computational efficiency and graphical output solely using GIS products. Our clients love working with

REACH and we are proud to offer this powerful tool to the water resources community.

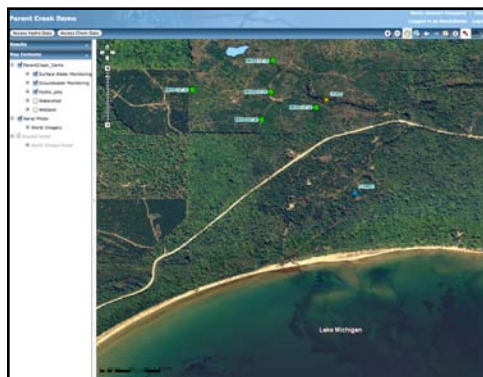


### Flexible

- ◆ Handles huge time-series data sets
- ◆ Generate basic or detailed (USGS-style) summary statistics of selected data
- ◆ Plot discrete data with time series data
- ◆ Overlay annual plots of the same data
- ◆ Creates plots and tables of discrete data

### GIS Function

- ◆ Web access makes basic GIS function available for everyone
- ◆ Easy anywhere, anytime access via the internet to your project's spatial data
- ◆ Effectively communicate specific geographical relationships



### Efficient

- ◆ Automated real-time data
- ◆ Plots and tables are easy and fast to generate
- ◆ Converts data on the fly from hourly to mean daily
- ◆ Notification when user defined thresholds are exceeded

Data download

- ◆ Efficient data downloading into spreadsheets

### Secure

- ◆ User name and password
- ◆ On and off-site backup
- ◆ Off-site disaster recovery system
- ◆ Encrypted data transmission

LOCATION	PARAMETER UNIT	Jun 2008	Jul 2008	Aug 2008	Sep 2008	Oct 2008	Nov 2008	Dec 2008	Jan 2009	Feb 2009	Mar 2009	Apr 2009	May 2009	Jun 2009
Metals														
MW004A	Antimony ug/L	0.5	0.5	0.5	0.5	0.5	0.5	0.5	0.5	0.5	0.5	0.5	0.5	0.5
MW004A	Arsenic ug/L	1.3	1.2	1.4	0.5	1.5	0.5	1.4	0.5	1.4	0.5	1.4	0.5	1.4
MW004A	Barium ug/L	14	8.3	8	11	7.4	10	11	9.4	10	11	9.4	10	11
MW004A	Beryllium ug/L	0.5	0.5	0.5	0.5	0.5	0.5	0.5	0.5	0.5	0.5	0.5	0.5	0.5
MW004A	Boron ug/L	38	20	10	10	10	10	10	10	10	10	10	10	10
MW004A	Cadmium ug/L	0.1	0.1	0.1	0.1	0.1	0.1	0.1	0.1	0.1	0.1	0.1	0.1	0.1
MW004A	Chromium ug/L	0.5	1.2	0.5	0.5	0.5	0.5	1.6	0.5	1.6	0.5	1.6	0.5	1.6
MW004A	Cobalt ug/L	7.5	7.5	7.5	7.5	7.5	7.5	7.5	7.5	7.5	7.5	7.5	7.5	7.5
MW004A	Copper ug/L	0.5	0.5	0.5	0.5	0.5	1	1.1	0.5	1.1	0.5	1.1	0.5	1.1
MW004A	Iron ug/L	10	10	10	10	10	10	10	10	10	10	10	10	10
MW004A	Lead ug/L	0.5	0.5	0.5	0.5	0.5	0.5	0.5	0.5	0.5	0.5	0.5	0.5	0.5
MW004A	Lithium ug/L	4	4	4	4	4	4	4	4	4	4	4	4	4
MW004A	Manganese ug/L	10	17	22	12	11	14	5	2.5	14	5	2.5	14	5
MW004A	Mercury ug/L	2.37	2.22	1.74	0.801	0.546	0.646	0.684	0.25	0.646	0.684	0.25	0.646	0.684
MW004A	Molybdenum ug/L	46	13	5	27	5	14	14	27	5	14	14	27	5
MW004A	Nickel ug/L	1	1	1	1	1	1	1	1	1	1	1	1	1
MW004A	Selenium ug/L	0.5	0.5	0.5	0.5	0.5	0.5	0.5	0.5	0.5	0.5	0.5	0.5	0.5
MW004A	Silver ug/L	0.1	0.1	0.1	0.1	0.1	0.1	0.1	0.1	0.1	0.1	0.1	0.1	0.1
MW004A	Str MWO04A ug/L	36	30	26	30	26	33	30	27	33	30	27	33	30
MW004A	Str MWO010 ug/L	1	1	1	1	1	1	1	1	1	1	1	1	1
MW004A	Str MWO010 ug/L	1.8	2.2	2.7	1.4	2.2	2	1.7	0.5	2	1.7	0.5	2	1.7
MW004A	Str MWO010 ug/L	5	5	5	5	5	5	5	5	5	5	5	5	5

### Intuitive

- ◆ Menu driven, not another program to learn
- ◆ The feel of the interface makes you forget you are running an application
- ◆ More like an internet search than working with Excel
- ◆ Increases your ability to quickly analyze data and spot trends and relationships

### Cost Effective

*The REACH System is so intuitive and fast that you will be focused on exploring your data instead of on running software*